



SP - SM limit switch box series

Compact limit switch box, designed not only for the industrial market, but for indoor applications in hazardous areas.

Available in either glass reinforced resin or nickel plated aluminum, with flat lid or 3D indicator.

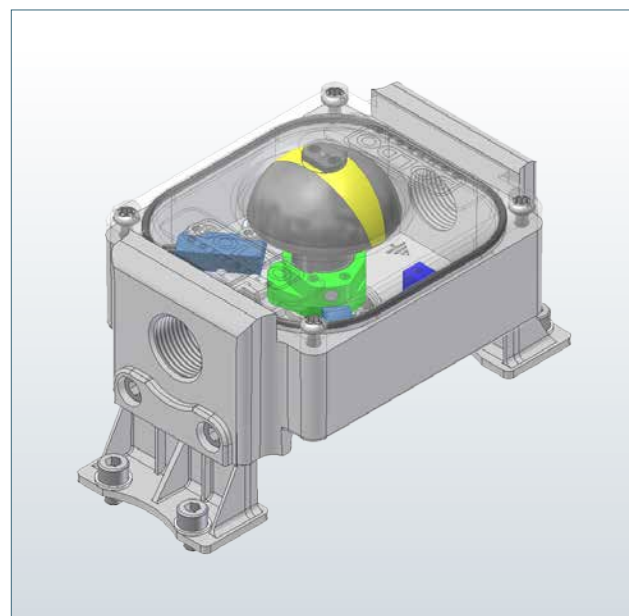
The SP is a corrosion resistant device, able to satisfy the needings in water treatment and desalination plants, both SP and SM, can also match the Ex ia IIC T6 standards with the integral intrinsically safe certification, covering enclosure and electrical components inside.

With these devices, we are providing a ready to mount solution, thanks to the integrated Namur mounting kit.



Features

- Glass reinforced resin enclosure with transparent polycarbonate lid, ensuring a device totally unaffected by corrosion, in salty and humid atmosphere.
- One cable entry as standard, for the SP series, and two cable entries, for the SM, either metrics or imperial.
- Enhanced strength on the composite enclosure, with a thick molding and durable threaded cable entries.
- Easy wiring through the terminal PCB board
- NOVA V3™ switch option ensures extreme durability and high power switching capabilities
- ASI communication protocol board
- Integrated mounting kit for Namur actuators



*Linking the Process
with the Control Room*

Product Specification

Technical Data:

Materials

- Glass reinforced resin body with transparent polycarbonate cover (SP series)
- Nickel plated aluminum body with transparent polycarbonate cover (SM series)
- Stainless steel fasteners

Approvals

ATEX, EAC

Ex II 2GD Ex ia IIC T4/T5/T6
Ex ia IIIB T44°C.....T108°C Db IP6*
Ta: -15 °C ≤ Ta ≤ 80 °C

SIL certificate:

Up to SIL 2 certified by TÜV

Protection rating:

IP 65

Cable entries options:

One cable entry M20 or 1/2" NPT (SP standard)
Two cable entry M20 or 1/2" NPT (SM)T

Temperature:

-15 °C +80 °C as standard temperature range
(depending on switch selection)

Soldo switch and sensors options:

NOVA V3™ N1

- Proximity hermetically sealed snap acting SPDT switch
- High power loop: rating up to 5A @ 250 VAC - 5A @ 28 VDC
- Temperature range -50 °C , +95 °C



NOVA V3™ N3 (usable for Exia protection)

- Proximity hermetically sealed snap acting SPDT switch
- rating up to 1A @ 250VAC - 1A @ 30 VDC (Exia rating max: 0,1A @ 30 VDC)
- Temperature range -50 °C , +95 °C



NOVA V3™ N4

- Proximity hermetically sealed snap acting DPDT switch
- High power loop: rating up to 5A @ 250 VAC - 5A @ 28 VDC
- Temperature range -50 °C , +95 °C



REED C4 (usable for Exia protection)

- Proximity hermetically sealed reed SPDT switch
- Inert gas contact chamber
- Rating up to 1A @ 24 VDC (Exia rating max: 0,1A @ 30 VDC)
- Temperature range -60 °C , +100 °C



More options available on request.



SP with flat visual position indicator



SP with 3D visual position indicator

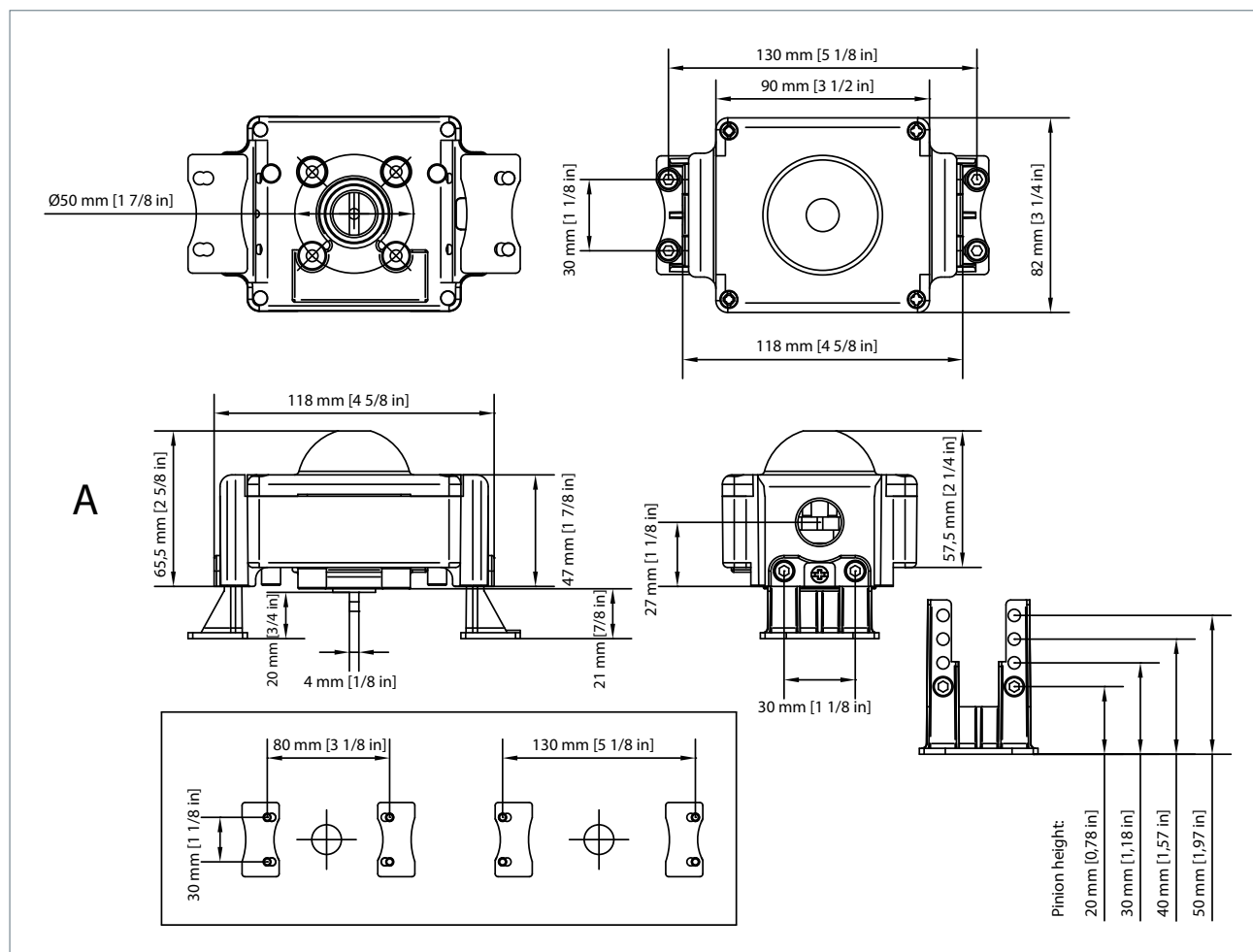


Product Ordering Matrix

Nomenclature

SP Glass reinforced plastic body with polycarbonate cover SM Aluminum body with polycarbonate cover	Box	SP	N1	2	H	0	-	D	H	W	0	0	R	1
01 SPDT el.mech. switch silver plated contacts 03 SPDT el.mech. switch gold plated contacts (for Exia cert) 1F DPDT el.mech. switch silver plated contacts C4 SPDT magnetic hermetically sealed reed switch, rating max. 0,1A @ 120 VAC, 1A @ 24 VDC (for Exia cert, low temp) N1 SPDT magnetic hermetically sealed silver plated snap acting contacts, max 5A @ 28 VDC, 250 VAC N3 SPDT magnetic hermetically sealed gold plated snap acting contacts, max 1A @ 30 VDC, 250 VAC (for Exia cert) 70 Inductive proximity NAMUR sensor NJ2-V3-N 2 wire NC logic (for Exia cert) 73 Inductive proximity sensor model NBB2-V3-E2, 3 wire PNP NO, 10-30 VDC, 0-100 mA A1 ASI protocol board, two switches for digital inputs, one output for solenoid valve control	Switch													
2 N°2 switches	Switch Quantity													
A Standard pcb board 4 Standard pcb board with blue poles for Exia certification	Terminals													
0 Black plastic enclosure (on SP series) N Nickel plated aluminum body (on SM series)	Coating													
D N°1 cable entries 1/2" NPT (standard on SP series) E N°1 cable entries M20 x 1,5 (standard on SP series) 1 N°2 cable entries 1/2" NPT* 2 N°2 cable entries M20 x 1,5* *available only on request	Cable Entries													
H 3D visual position indicator black and yellow Z Flat visual position indicator black and yellow	Visual Position Indicator													
W Weather proof A ATEX certified box G EAC certification for russian market	Approval													
0 Ordinary location 1 Certification marking: Ex II 2GD Exia IIC	Marking													
0 Weather proof IP65 7 Nema 4 and 4X	IP Protection rating													
R Ambient temperature range: -15 + 80 °C	Temperature													
1 Glass reinforced plastic body and polycarbonate cover (on SP series) 2 Nickel plated aluminum body and polycarbonate cover (on SM series)	Material													

Dimensional Data



soldo